



Forgotten
The Métis Residential School Experience

Assembly Instructions

July 2015

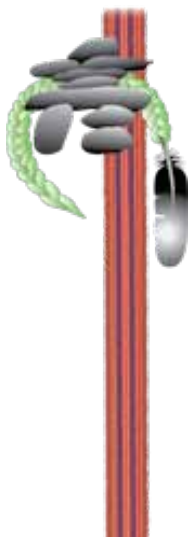
© 2015 Legacy of Hope Foundation

Reproduction in whole or in part of this document for personal use, and in particular for educational purposes, is authorised, provided the following conditions are respected: non-commercial distribution; respect of the document's integrity (no modification or alteration of any kind); and a clear acknowledgement of its source as follows:

Source: Legacy of Hope Foundation

Reproduction in whole or in part of this document for the purpose of adding it to data banks, encyclopaedias, websites or other reference sites is granted provided the Legacy of Hope Foundation is informed in advance.

The Legacy of Hope Foundation (LHF) is a national Aboriginal charitable organization whose purposes are to educate, raise awareness and understanding of the legacy of residential schools, including the effects and intergenerational impacts on First Nations, Inuit, and Métis, and to support the ongoing healing process of Residential School Survivors. Fulfilling this mandate contributes towards reconciliation among generations of Aboriginal peoples, and between Aboriginal and non-Aboriginal people in Canada.



Legacy of Hope Foundation
291 Dalhousie St., Suite 205
Ottawa, ON K1N 7E5
T: 613-237-4806 or 877-553-7177

www.legacyofhope.ca

Acknowledgements

Forgotten: The Métis Residential School Experience was developed by the Legacy of Hope Foundation in collaboration with curator Gregory Scofield and advisors Maria Campbell, Brenda MacDougall, Christi Belcourt, and Guy Freedman, as well as researcher Tricia Logan.

The LHF gratefully acknowledges and thanks all of the contributors to the project.

Funding for this project was provided by the Department of Canadian Heritage (Museums Assistance Program) and Aboriginal Affairs and Northern Development Canada.



Artwork titled *Maynaatchitewin* by Christi Belcourt.
Used with permission.

General Information

Once assembled, the exhibition will occupy a footprint of approximately 10 ft x 10 ft. Ceiling height must be at least 15 ft.

The exhibition can be successfully assembled by two people in one day.

A 3-step stool or a small A-frame ladder is required.

Please refer to the map at the end of this guide for the names of each wall section.

Assembling the Display Structure

The most efficient way to assemble the exhibit is to lay the components flat on the floor (*Figure 1*) and then lift the unit into an upright U-shaped position once the sections have been hinged together (*Figure 2*). The footplates will be attached at this point (*Figure 3*). All equipment needed is included with the exhibition, with the exception of a three-step ladder or stool that the borrowing venue will need to provide.

The exhibit consists of three equal-size squares with hinges connecting each square. There will be a centre square (B) and two side squares (A and C).

General guidelines:

Assemble Wall B first (the middle square of the three), then attach the wings.

Note: The foot plate with two holes only goes on Wall A.

To assemble the three squares, begin with Wall B – the centre wall of the U-shaped exhibit configuration. The method for assembling the squares is the same for each one.



Figure 1



Figure 2

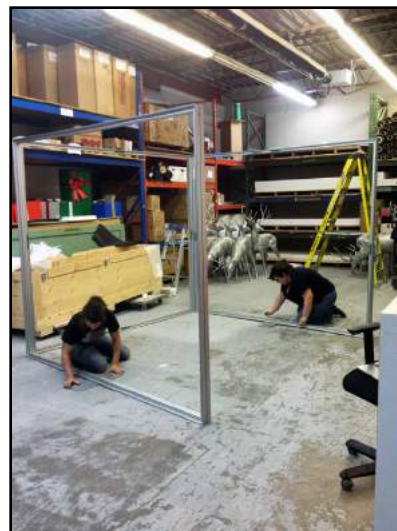


Figure 3

Position the two sections of Wall B Bottom (centre wall of the U) and attach together (Figures 4-6).



Figure 4

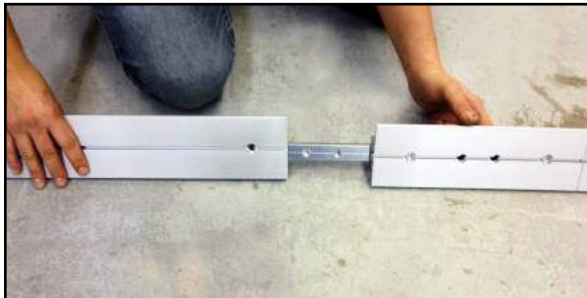


Figure 5

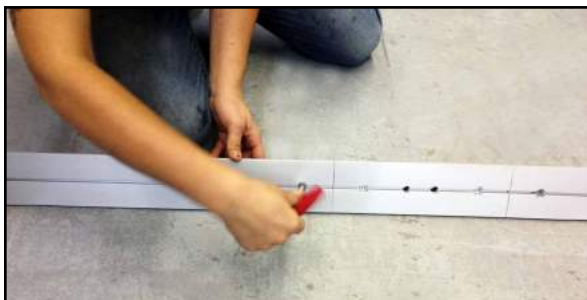


Figure 6

Attach the two sections labelled Wall B Left Side and Wall B Right Side and screw together in the same manner as Wall B Bottom. Secure each side to the bottom unit.

Once the Wall B Bottom, Left Side, and Right Side sections are in place and secure, attach the two sections labelled Wall B Top and secure to complete the square.

Repeat with Walls A and C paying close attention to the labelling on Wall B Left Side and Wall B Right Side sections. These sections also act as the side sections for Walls A and C and the connection points for each are indicated clearly.

Caution: When assembling Wall C, the bottom section with the hole has to be positioned next to the hinge to accommodate the wires for the light box.

Once the three squares have been successfully attached to one another, carefully lift the complete unit and position it in a U shape (Figure 7).

Collect the three foot plates, washers, and butterfly screws (Figure 9). Position the three footplates under each of the bottom wall sections (Figure 8). The footplate with two holes only goes under wall section A. Match the holes in the top of the bottom rail of the wall section with the holes in the footplate.

Once the footplates have been secured, the unit should be stable on its own when positioned as a U.

Locate the vertical bars (numbered 1 through 6) and match the numbers on the bars to the numbers on the Top of each Wall, accordingly (Figures 10-11).

Wall A – sections 5 + 6

Wall B – sections 3 + 4

Wall C – sections 1 + 2

**Do not over-tighten the screws!
Damage will be caused to the unit if the screws are too tight.**



Figure 7

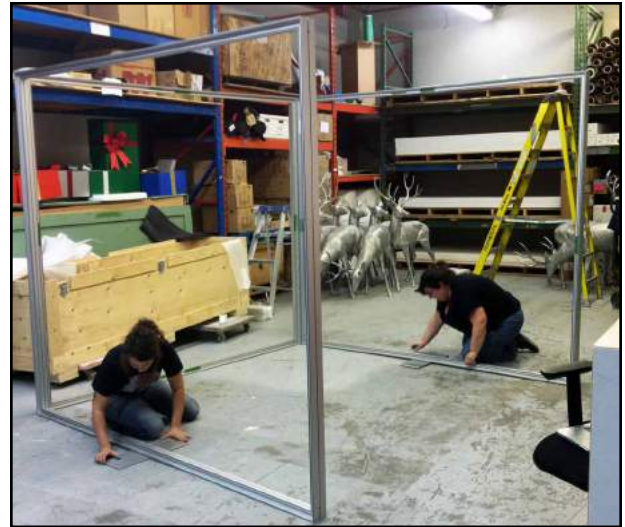


Figure 8



Figure 9



Figure 10



Figure 11

Specific instructions for attaching the numbered vertical sections

Wall A

Retrieve vertical sections 5 + 6.

Space the two pieces apart equally, as per the numbers indicated on the Top rail of Wall A (Figures 10 and 11).

Wall B:

Retrieve:

- Vertical sections 3 + 4
- Horizontal bars G + H
- Horizontal bars C + D
- Horizontal bars E + F
- Masonite board Wall B, Section G
- Masonite board Wall B, Section C
- Masonite board Wall B, Section E

The spacing of sections 3 + 4 will need to relate to the width of the horizontal pieces to be inserted.

Insert and secure (with integral screw) vertical section 4 and then insert and secure horizontal bars G and H according to the markings on vertical section 4 (*Figure 12*), but leaving more space than is needed to allow for the insertion of Masonite Wall B, section G (*Figure 13*). Match the G on the Masonite board with the G on vertical section 4. There is a groove on horizontal section H in which the Masonite board will sit (*Figure 14*). Once the Masonite board is in the groove, slide section H up towards section G so that the board is secure (*Figure 15*). Tighten all with the integral screws.



Figure 12



Figure 13

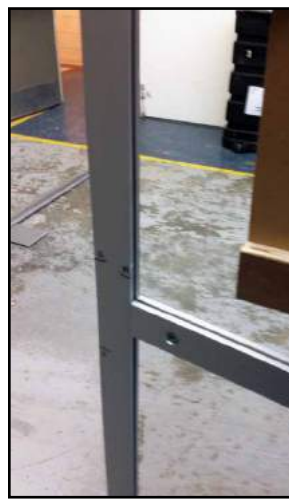


Figure 14



Figure 15

Then position vertical section 3 and attach horizontal bars C and D according to the markings on vertical section 3, leaving enough space to insert Masonite Wall B, section C. Once in the groove, slide the horizontal bars together to secure. Insert horizontal bars E and F, again leaving enough space to insert Masonite wall B, section E.

See *Figure 8* for the entire wall assembled.

Wall C:

Retrieve:

- Vertical section 2
- Horizontal bar LB 1 (light box 1)
- Cintra sheet LB3
- One sheet of opaque Plexiglas (un-numbered)
- Horizontal bar LB 2 (with wires)
- Horizontal bars A + B
- Masonite board Wall C, section A

Insert and secure (with integral screw) vertical section 2. Secure horizontal bar LB 1.

Retrieve one sheet of cintra (LB 3) and one sheet of opaque plexi (no number).

Slide cintra sheet LB3 into the groove so that it is supported by LB1. (*Figure 16*)

Then put horizontal bar LB2 (with wires) on top and secure with integral screws (*Figure 17*).

On the inside of the display structure, attach the opaque plexi sheet using the Velcro (*Figure 18*).



Figure 16



Figure 17



Figure 18

Insert and secure (with integral screw) vertical section 1.

Secure horizontal bars A and B in the positions marked, leaving space for the insertion of Masonite board Wall C, section A. Slide the Masonite wall into groove on the horizontal bar B and secure the whole with A (Figure 19).

Run the power source through the hole in the Bottom C, and attach to the Y connections. There will be two extra connections in the Y wire. Two connect to the light box, the other to the power source.



Figure 19

Installation of the Fabric Artwork and Artefacts

For each of the walls, the front and back artwork is in the same storage bag.

Install the artwork on the inside of the structure first, then position the artifacts, then secure the exterior fabric artwork. Install the fabric using hands only – no tools! Bend the hard edge of the fabric slightly and insert it into the top groove on the display structure (Figure 20). Start with the top of the fabric artwork and then do the sides and the bottom (Figure 21). Small pink holes on the images indicate where artifacts will be installed.



Figure 20

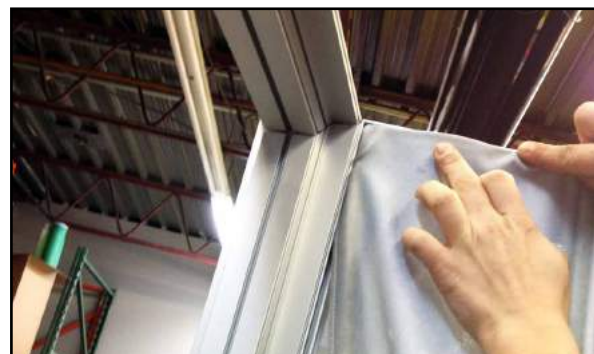


Figure 21

The screws needed for each artefact are packed with it.

Once the interior artwork panels have been installed, two people are needed to install the artifacts. One to hold the piece, the other to secure it.

Once the interior artwork and artefacts have been installed, plug in the light box. Then install the exterior artwork.

Wall A:

Interior artwork: How Did the Residential Schools Impact the Métis?

Exterior artwork: The Métis – Timeline 1600s – post-1885

Artefacts:

Section of a beaded vest positioned on the man (Figure 22)

The screws for this piece will go from front to back. Carefully push the screws through to the back and secure with washers and butterflies. (Figure 23)



Figure 22



Figure 23

Fragment of a dish positioned on the woman (Figure 24)

Note that this dish is very fragile.

The installation method is the same as for the vest (Figure 25).



Figure 24



Figure 25

Bow positioned on the boy

The bow is secured using three screws (Figure 26 - 32)

Note that the screw in the proper right hand of the boy has a washer in the front of the artwork and behind, and that the screw covers the end of the bow, not the side.

Secure the screws as per the other artefacts (Figure 33).



Figure 26



Figure 27



Figure 28

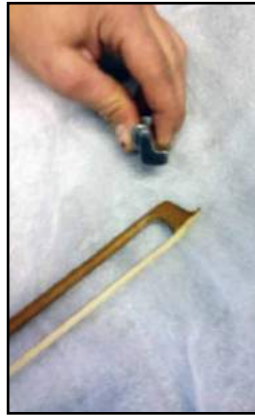


Figure 29



Figure 30

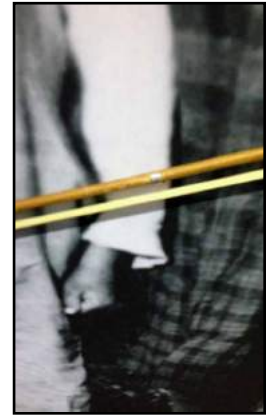


Figure 31



Figure 32



Figure 33

Wall B: (centre wall)

Interior artwork: What Were the Residential Schools?

Exterior artwork: Timeline 1906 – 1981

Wall C:

Interior artwork: Répercussions des pensionnats: comment ont-elles touché les Métis?

Exterior artwork: The Métis Today – Timeline

Artefact: Apple positioned in lower right corner (Figure 34)

Unscrew the apple from the wooden support. The wooden support is not used while the show is on view and should be stored. Carefully put the screw through the back to the front, not tearing the fabric and then screw the apple onto the screw (Figure 35).



Figure 34



Figure 35

Installation of the Staircase with the Doll and Shoes

A small set of stairs with a doll and shoes is to be positioned along the interior wall of the Centre Square (Wall B) in front of the interior artwork panel, *What Were the Residential Schools?*

Place the larger section of stairs first and slide onto footplate (*Figures 36 - 37*).

Next position the top stair in the groove (*Figure 38a*). The wood blocks will be on the inside of the top stair.



Figure 36

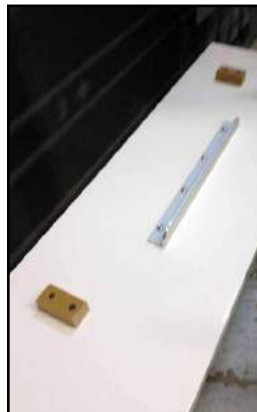


Figure 37



Figure 38a



Figure 39



Figure 38b (doll and shoes positioned on stairs)

Takedown and Repacking

To dismantle the exhibit, follow the reverse order of the installation exactly.

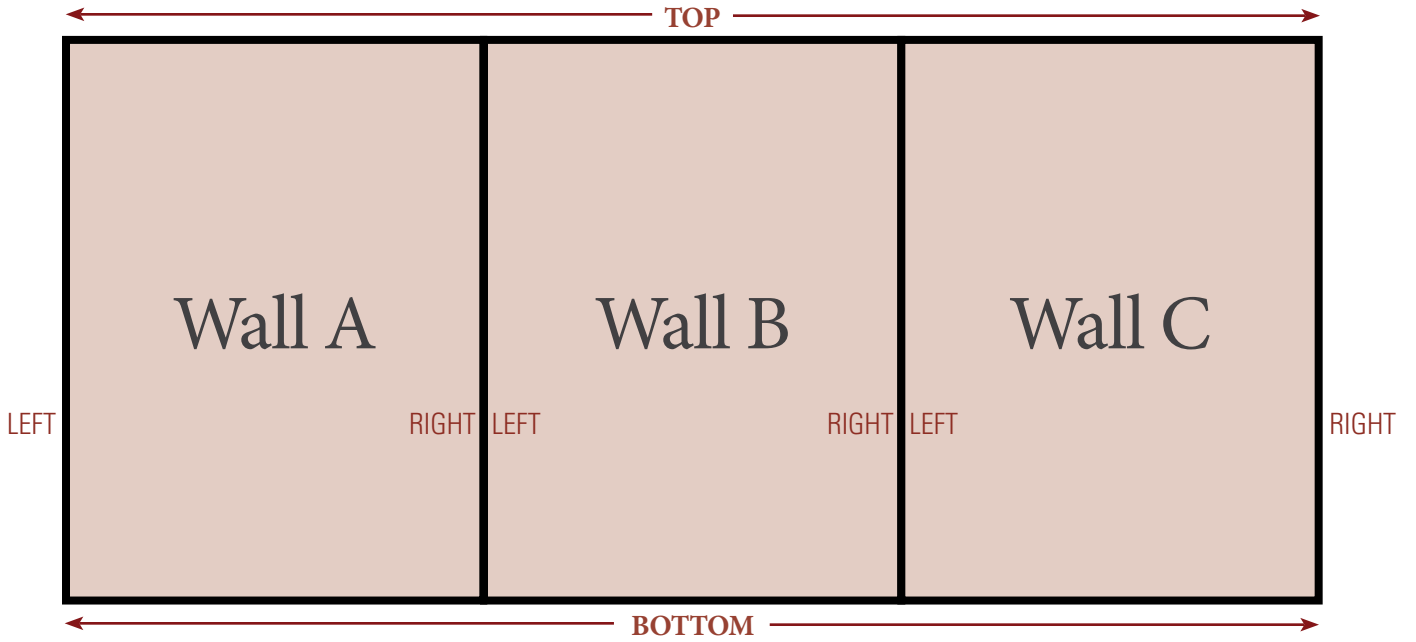
To start the removal of the fabric panels, pull gently on the small black tab at the lower left corner of the panel (*Figure 39*).

When dismantling the display structure, unscrew only the screw that is circled in red.

If you encounter problems during the installation process or have suggestions for how to improve the instructions, please contact:

Kate Laing
Exhibitions Manager
Legacy of Hope Foundation
klaing@legacyofhope.ca
613-612-4551

Map



Lay it flat.

Do not over-tighten the screws!
Damage will be caused to the unit if the screws are too tight.

